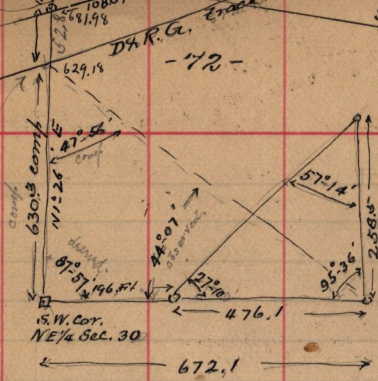


Wilson Irrig. Co. to Ogden City .132
 N71°29'E
 108.57
 108.57
 69.98
 D.R.G. track
 583° E

March 30-1893

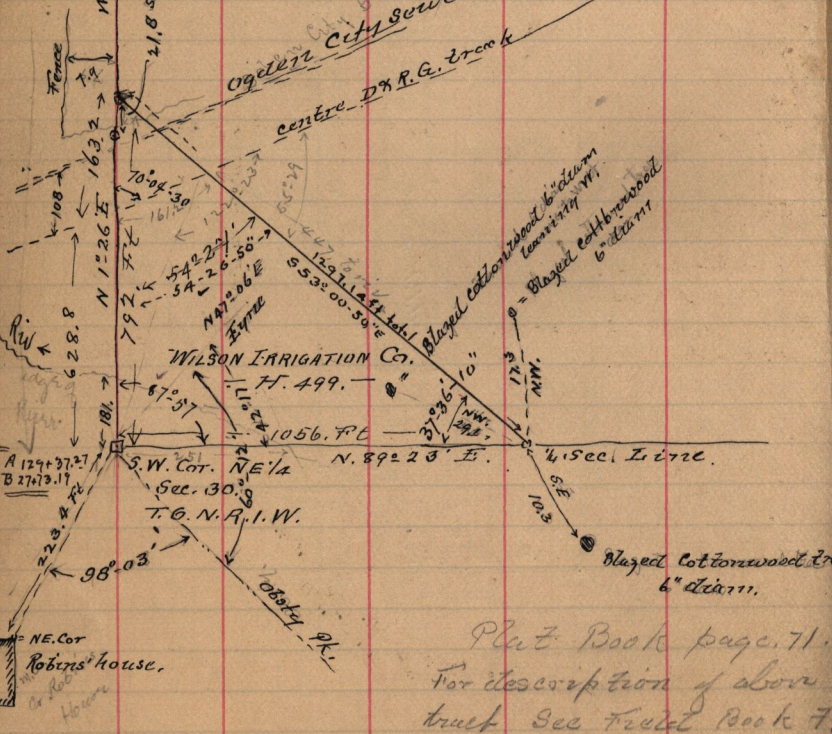


to triangulate
 S₂₇₋₁₀ = 9.679511
 ac = 0.34028
 57-14 = 9.924733
 258.5 = 2.412461
 476.1 → 2.677679

sin 47°56' = 9.870618
 ac = 0.129382
 sin 44°07' = 9.842685
 log 672.1 = 2.827434
 " 630.3 = 2.799501

8 1/4 cor
 adapted
 629.18

2670.08
 West line 1/4 Sec.
 21.8 s. to pole



Plat. Book page 71.
 For description of above tract see Tract Book 7, page 98.